

# DROXFORD COMMUNITY NEWSLETTER



[www.facebook.com/Droxford-Village-Community](https://www.facebook.com/Droxford-Village-Community) [WWW.DROXFORD.WEB.CO.UK](http://WWW.DROXFORD.WEB.CO.UK)

Issue 23: September 2018

## There's going to be a bonfire ... on Saturday 10 November, up at the rec, 5.30pm.

Calling all volunteers for a helping hand. An initial meeting has been arranged for Tuesday 25 September, 6pm, at The Pavilion. Can't make it? Contact [Ann](#) Donations of dry wood at the rec ground, from Saturday 3 November. Bring your family and friends. Everyone welcome!



### Need to know

**Work on M27:** Work is starting on creating a smart motorway. There'll be plenty of disruption. More info [here](#).

**Community bus:** Did you know that it can be hired for private events in addition to its regular timetable. [Contact](#).

**Church yard:** Please keep all dogs on leads when walking through the grounds. Don't forget the dog bin at the main entrance ... not nice to mow otherwise.

**Community hub:** The first phase of building the annexe at the church is almost complete with the concrete base now laid.

### What's on

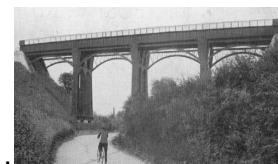
- History Group: [Wessex Archaeology](#) – Thurs 27 Sept
- Fire station: [car wash](#) – Sat 29 Sept
- MV Garden Club: [Autumn plant sale](#) – Sat 6 Oct
- [Harvest supper](#) – Sat 13 Oct
- [Village tidy up](#) – Sat 27 Oct
- Film Night: [Phantom Thread](#) – Wed 31 Oct
- [Christmas Market](#) – Sat 17 Nov

**Parish Councillor vacancy:** Are you enthusiastic about your village? Keen to get involved? Email the [Parish Clerk](#) to find out more.

**Ditches & flooding:** Getting ready for a wet autumn and winter. Know your [responsibilities](#) if you own land.

**Need to contact HCC?** A review is currently underway to explore ways for residents, as well as Parish Councils, to contact HCC. Give your feedback by taking part in the [survey](#).

## Meon Valley Railway



Fascinating clip from [Youtube](#) pre South Downs National Park days, giving an insight into the railway line, the viaduct at West Meon, Droxford station and how its now managed for recreational purposes.

To request an item be added for the next newsletter, please [email](#)  
Next publication: November. [Droxfordweb.co.uk](http://Droxfordweb.co.uk) [Facebook](#) [Unsubscribe](#)